

<b>STRENGTH CALCULATION SHEET</b>	Document No.	Rev.	Page
	YJAT-1000-ST5	0	-

### 1. DESIGN CONDITION (설계조건)

1-1 Data sheet

**VOLUME : 10.0 m<sup>3</sup>**

No.	DESCRIPTION	DESIGN DATA	참고사항	
1	APPLICATION CODE(적용규격 코드)	KS B 6750&ISHL		
2	VESSEL TYPE(압력용기 타입)	VERTICAL		
3	FLUID(사용유체)	AIR or N2		
4	DESIGN PRESSURE(설계압력)	INTERNAL	0.97 Mpa	9.9 kgf/cm <sup>2</sup>
		EXTERNAL	0 Mpa	
5	OPER. PRESSURE(사용압력)	0.87 Mpa	8.9 kgf/cm <sup>2</sup>	
6	DESIGN TEMPERATURE(설계온도)	INTERNAL	100 °C	
		EXTERNAL	- °C	
7	OPER. TEMPERATURE(사용온도)	INTERNAL	AMB. °C	
8	HYDRO. TEST PRESSURE(수압시험 압력)	1.26 Mpa	12.9 kgf/cm <sup>2</sup>	
9	PNEU. TEST PRESSURE(공기압시험 압력)	N.A Mpa		
10	HEAD TYPE (경판형상)	2 : 1 ELLIPSOIDAL HEAD		
11	RADIOGRAPHIC EXAMINATION 비파괴 검사	SHELL	NO	
		HEAD	N.A	
12	JOINT EFFICIENCY (S/H) (용접효율)	0.7 / 0.85		
13	PWHT [ S / H / H (S.R 처리) ] (후열처리)	N.A / N.A / N.A	* S.R 처리 : Stress Reallies	
	IMPACT & THERMAL LOAD, ETC	N/A		
14	CORROSION ALLOWANCE(부식여유)	0.0 mm		
15	SHELL INSIDE DIAMETER(동체내경)	1915 mm		
16	M. A. W. P.	NEW & COLD	-	
		HOT & CORR.	-	
17	LOCATION	INDOOR		
18	WEIGHT(무게)	ERECTION	2200 Kg	
		OPERATING(사용)	2200 Kg	
		FULL WATER(수압)	12200 Kg	
19	MATERIAL (재질)			
	- SHELL	STS304	138 N/mm <sup>2</sup>	
	- HEAD	STS304	138 N/mm <sup>2</sup>	
	- NOZZLE PIPE	STS304TP (W)	116 N/mm <sup>2</sup>	
	- NOZZLE FLANGE	STS304	114 N/mm <sup>2</sup>	
	- SUPPORT	SS400	100 N/mm <sup>2</sup>	
	- EXT. BOLT /NUT	SNB7/S45C	130 / 122 N/mm <sup>2</sup>	
	- LIFTING LUG	STS304	114 N/mm <sup>2</sup>	
	- GASKET	NON-ASBESTOS	-	

HYDRO. TEST PRESSURE:  $P \times 1.3 \times \frac{138}{138} = 1.26 \text{ Mpa}$

# STRENGTH CALCULATION SHEET

Document No.

Rev.

Page

YJAT-1000-ST5

0

-

## 1. DESIGN CONDITION

1-2. Layout Drawing

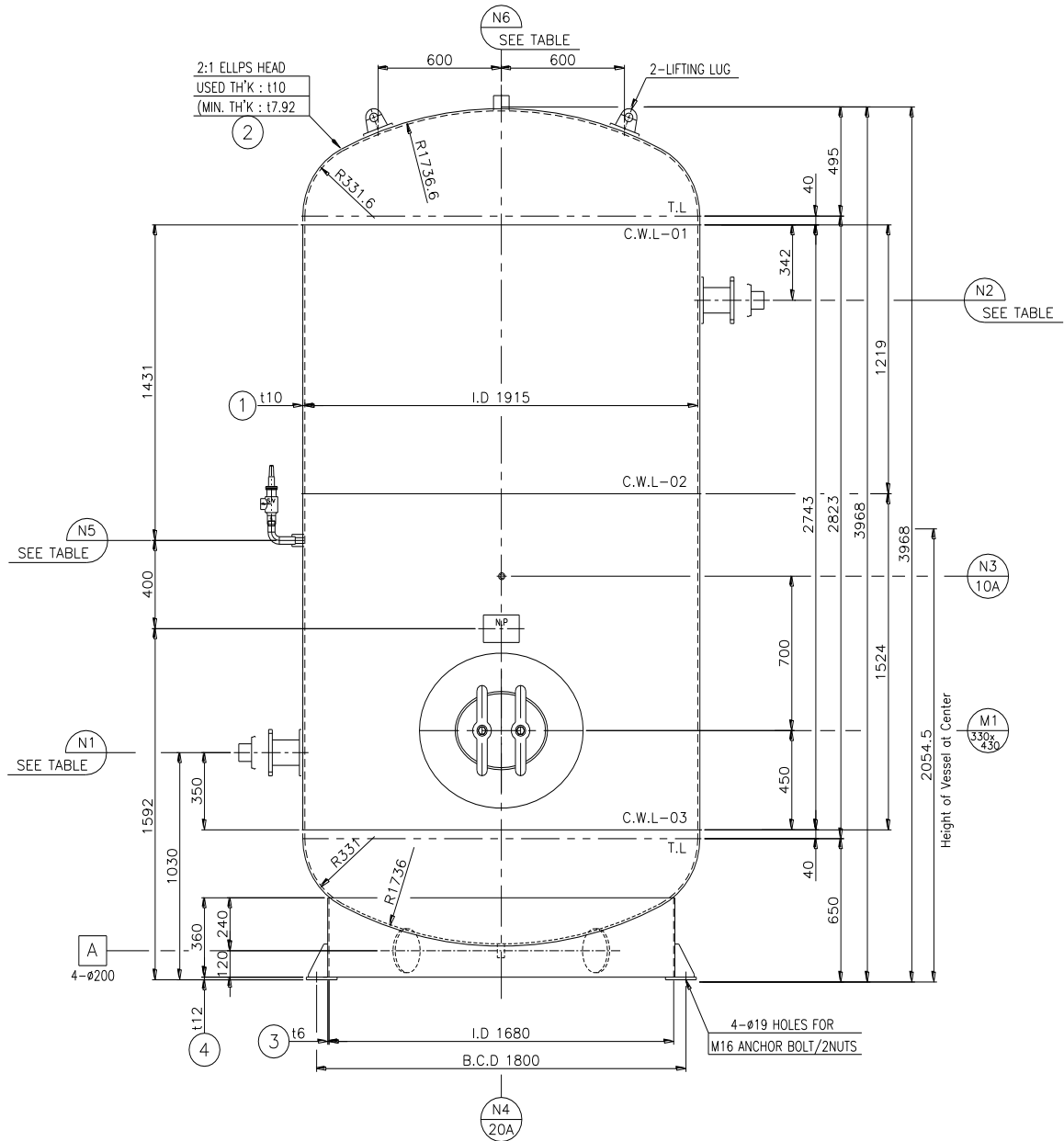


TABLE OF NOZZLE

TANK N1 & N2	20A	25A	32A	40A	50A	65A	80A	100A	125A	150A	200A	250A	300A
TYPE	HALF COUPLING							KS10K, SOFF.					
N5,N6(SAFETY VALVE)	15A	15A	15A	15A	25A	32A	40A	40A	40A	50A	65A	65A	80A
TYPE	HALF COUPLING (양정식)							전량식 HALF COUPLING / KSB6216					
** 인입경 [N1]과 안전변[N5](N6) 규격은 발주자의 요구에 따라서 적용한다.													