

1. LAYOUT DRAWING

Document No.

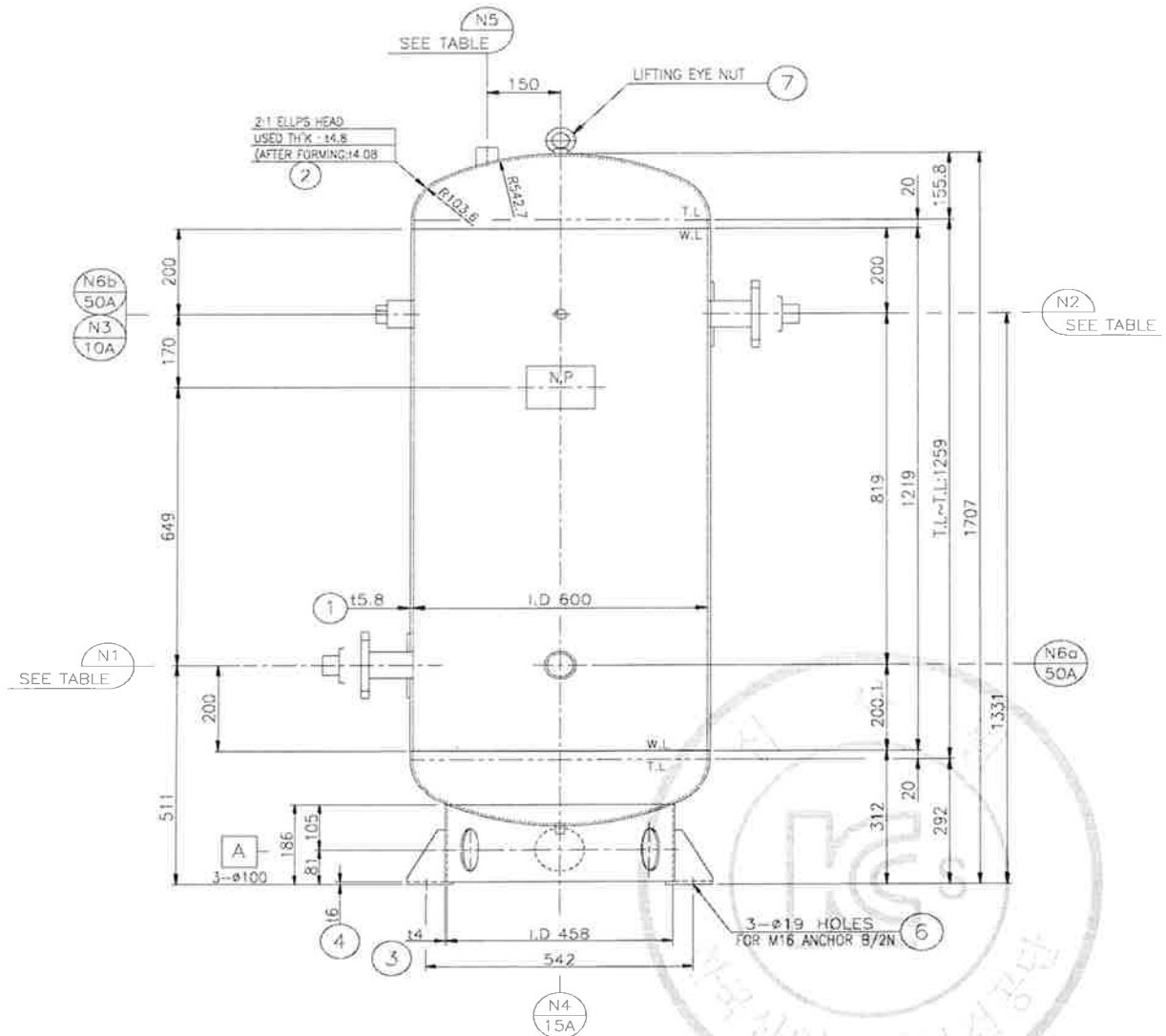
Rev.

Page

YJAT-400L-AM

0

-



불법복제 및 배포금지

2. DESIGN CONDITION (설계조건)	Document No.	Rev.	Page
	YJAT-400L-AM	0	-

VOLUME : 0.4 m³

No.	DESCRIPTION	DESIGN DATA		참고사항			
1	APPLICATION CODE(적용규격 코드)	ASME SEC.VIII, DIV.1					
2	VESSEL TYPE(압력용기 타입)	VERTICAL					
3	FLUID(사용유체)	AIR or N ₂					
4	DESIGN PRESSURE(설계압력)	INTERNAL	0.98 Mpa				
		EXTERNAL	0 Mpa				
5	OPER. PRESSURE(사용압력)	0.88	Mpa				
6	DESIGN TEMPERATURE(설계온도)	INTERNAL	100 °C				
		EXTERNAL	- °C				
7	OPER. TEMPERATURE(사용온도)	INTERNAL	AMB. °C				
8	HYDRO. TEST PRESSURE(수압시험 압력)	1.274	Mpa				
9	PNEU. TEST PRESSURE(공기압시험 압력)	N.A	Mpa				
10	HEAD TYPE (경판형상)	2 : 1 ELLIPSOIDAL HEAD					
11	RADIOGRAPHIC EXAMINATION 비파괴 검사	SHELL : E1	LONGITU'L JOINT	NO	* S.R 처리 : Stress Reallies		
		SHELL : E2	CIRCUM'L JOINT	NO			
		HEAD		N.A			
12	JOINT EFFICIENCY (용접효율)	SHELL : E1	LONGITU'L JOINT	0.70			
		SHELL : E2	CIRCUM'L JOINT	0.65			
		HEAD		0.85			
13	PWHT [S / H/ H (S.R 처리)] (후열처리)	N.A	/	N.A		/	N.A
	IMPACT & THERMAL LOAD, ETC	N/A					
14	CORROSION ALLOWANCE(부식여유)	1.0		mm			
15	SHELL INSIDE DIAMETER(동체내경)	600		mm			
16	M. A. W. P.	NEW & COLD	-	-			
		HOT & CORR.	-	-			
17	LOCATION	INDOOR / OUTDOOR					
18	WEIGHT(무게)	ERECTION	162	Kg			
		OPERATING(사용)	162	Kg			
		FULL WATER(수압)	465	Kg			
19	MATERIAL (재질)						
	- SHELL	SS400	114	N/mm ²			
	- HEAD	SS400	114	N/mm ²			
	- NOZZLE PIPE	SPP(E)	61	N/mm ²			
	- NOZZLE FLANGE	SS400	114	N/mm ²			
	- SUPPORT	SS400	114	N/mm ²			
	- EXT. BOLT /NUT	SNB7/S45C	130 / 122	N/mm ²			
	- LIFTING LUG	SS400	114	N/mm ²			
- GASKET	NON-ASBESTOS						

HYDRO. TEST PRESSURE: $P \times 1.3 \times \frac{114}{114} = 1.274 \text{ Mpa}$