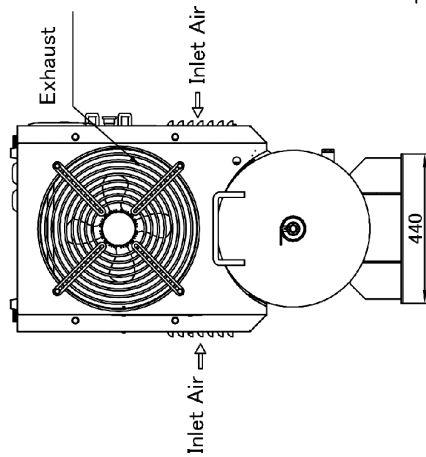
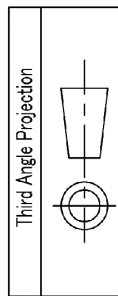
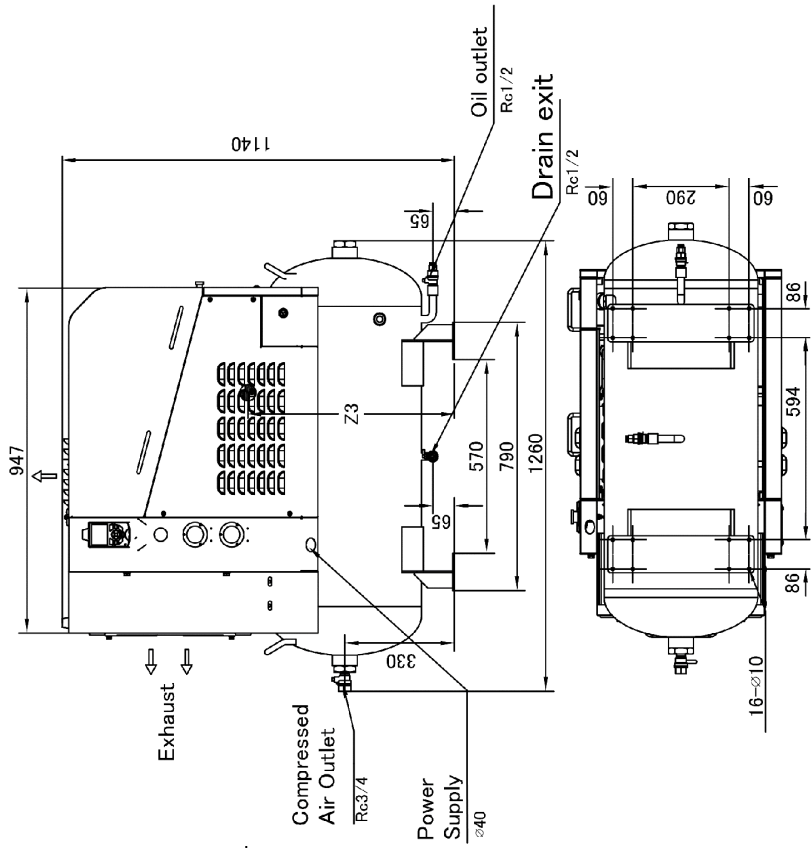
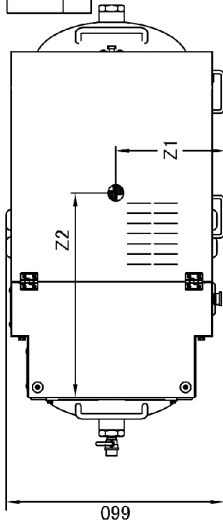


Oil-Lubricated Screw Air Compressor		DATE	기술21-0720-	
		CUSTOMER		
		MODEL No.	LRST-150	
1. BASIC COMP.				
Compressed method		Oil-Lubricated Screw, One Stage		
Compressed fluid		Atmosphere (air), 1~45°C		
Driving method		Direct driven with coupling		
Cooling method		Radiator + cooling fan air-cooled		
Operation control		Inverter control (speed control+load/unload+Low back pressure+automatic start, stop)		
Max. discharge pressure		0.80 MPa		1.0 MPa
1st Figure : Effective volume flow m³/min (ISO 1217/Annex C) 2nd Figure : Terminal power kW (ISO 1217/Annex C)	Frequency Range			
	100%	2.3		2
		17		17.5
	90%	2.1		1.8
		15.3		15.8
	80%	1.8		1.6
		13.6		14
	70%	1.6		1.4
		12		12.3
	60%	1.38		1.2
		10.2		10.5
	50%	1.15		1
8.5		9		
40%	0.92		0.8	
	6.8		7.5	
2. MOTOR				
Nominal Motor rating		15 kW		
Motor type		Oil Cooling PM Motor		
Power supply ※1		Three-phase 380V		
Full load Current		28 A	27 A	
Starting Current		28 A	27 A	
Motor output at shaft		15 kW		
Total input power (incl. fan)		17 kW		
Motor enclosure (IP rating)		IP65		
Motor speed min/max		3,000 rpm	2,800 rpm	
Motor efficiency		95.25%		
Service factor ※2		1.2		
Power factor		0.97		
Fan motor rating		0.26 kW		
Cooling air capacity		1,260 m ³ /h		
3. Air-End				
Male rotor diameter		106.8 mm		
Male rotor speed		3,000 rpm	2,800 rpm	
Circumferential speed		16.7 m/s	15.6 m/s	
4. PROTECTION				
Over pressure		Detected by pressure sensor		
Over heating		Detected by temperature sensor		
Overloaded current		Detected by thermal relay		
Negative phase, Low voltage, open phase protection		Detected by Negative sequence protector, voltage relay		
Others		Emergency stop switch, Safety valve		
5. Dimensions / Weights / General Data				
Discharge air outlet		Rc 3/4		
Dimension (L x W x H) ※3		1,260 x 660 x 1,140 mm		
Approx weight		320 kg		
Air Receiver Capacity		130 L		
Oil volume		9 L		
Residual oil content		≤ 3 mg/m ³		
Noise level (front face 1.5m) ※4		69 ± 3 dB		
Air temperature set outlet		Atmosphere + 15°C less than		
Accessories		Instruction manual, Key, Ball valve		
REMARK				
※1. 3phase 220V is optional.				
※2. Service factor means the allowable limit of the air compressor motor.				
※3. Dimension is outer dimension which does not include ball valve.				
※4. The oil volume is at the initial charge for manufacture, so it is need to replenish periodically.				
※5. Noise level is measured at an anechoic room at max. speed. (1.5m from the front, 1m from the ground)				

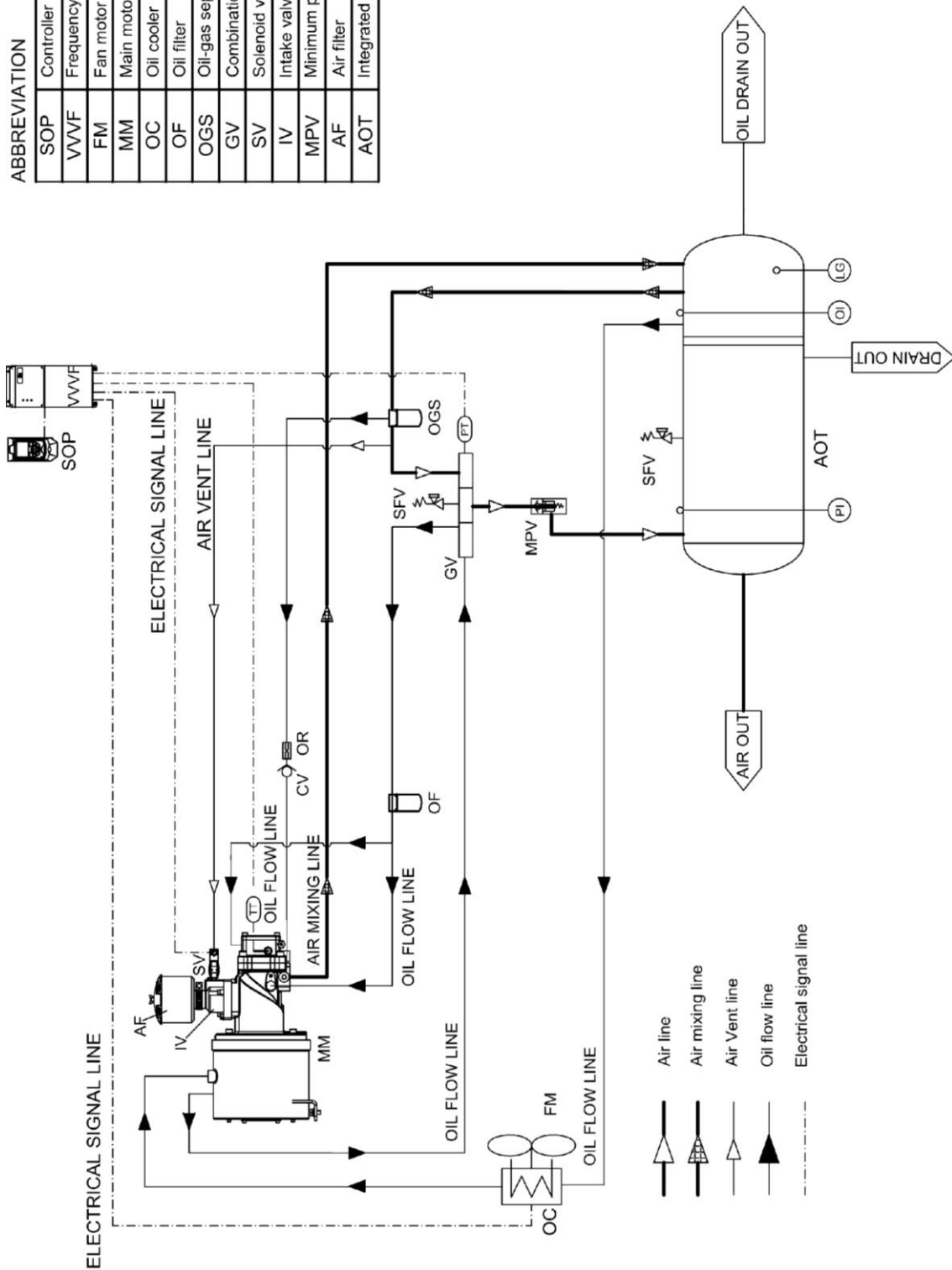
Center of gravity	Mass (kg)	Dimension (mm)		
		Z1	Z2	Z3
LRST-1501	340	360	610	580



Product Name	Oil-Lubricated Screw Air Compressor	Model	LRST-150	REV. 0
--------------	--	-------	----------	--------

ABBREVIATION

SOP	Controller
VVVF	Frequency converter
FM	Fan motor
MM	Main motor
OC	Oil cooler
OF	Oil filter
OGS	Oil-gas separator
GV	Combination valve
SV	Solenoid valve
IV	Intake valve
MPV	Minimum pressure valve
AF	Air filter
AOT	Integrated tank


SYMBOL LIST

	Pressure transmitter		Temperature transmitter		Pressure indicator		Oil pressure indicator
	Oil level gauge		Check valve		Orifice		

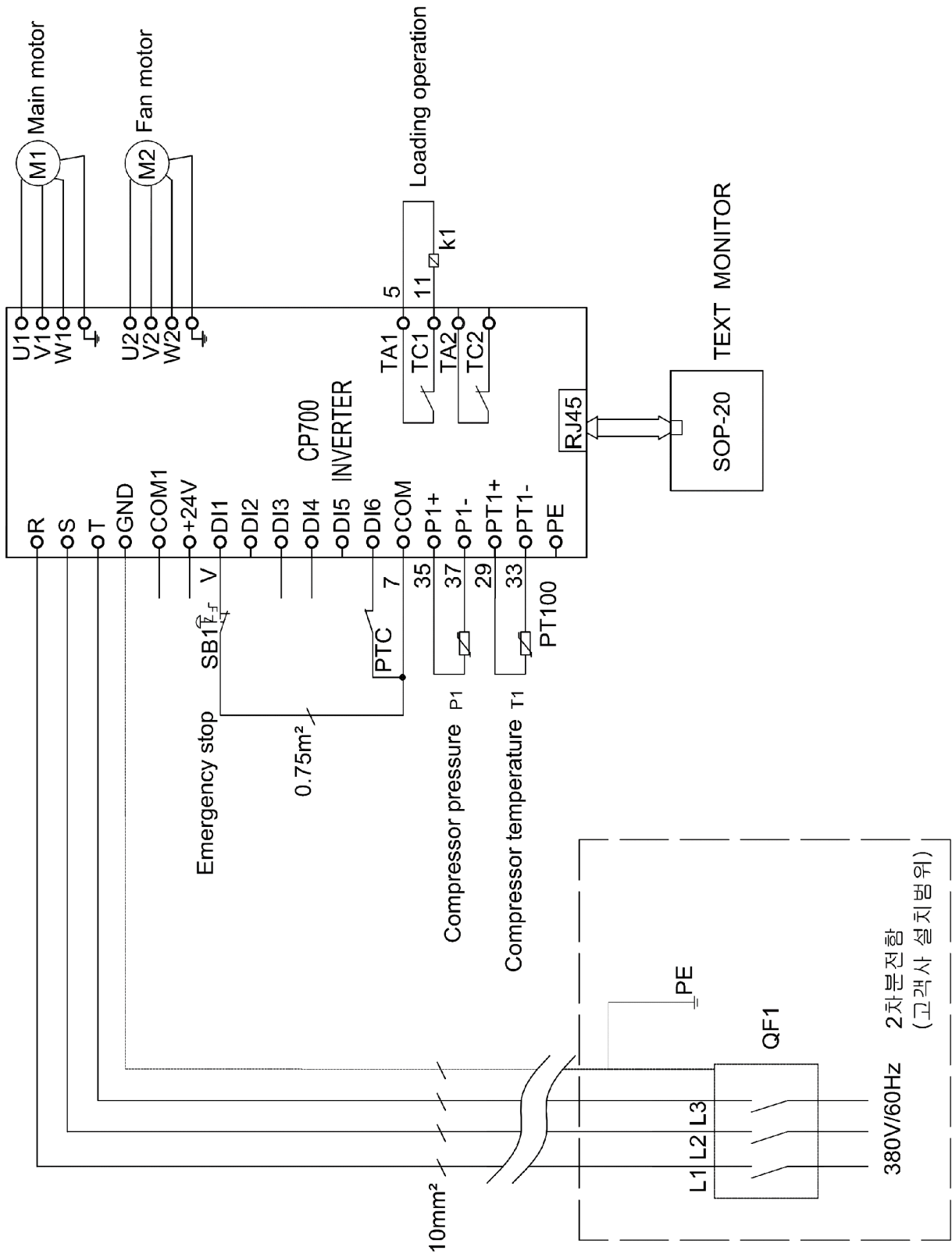
Product Name

Oil-Lubricated Screw Air Compressor

Model

LRST-150

REV. 0



Product Name

Oil-Lubricated Screw Air Compressor

Model

LRST-150

REV. 0